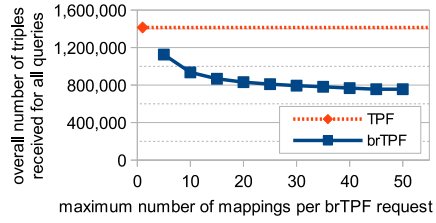
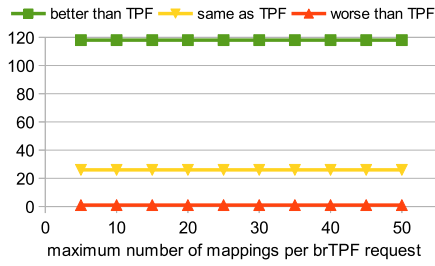


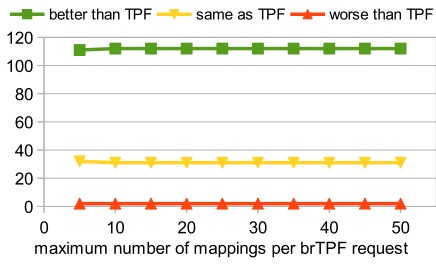
(a) sum of all #req for the WatDiv runs



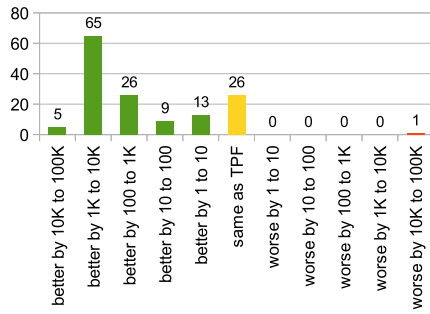
(b) sum of all dataRecv for the WatDiv runs



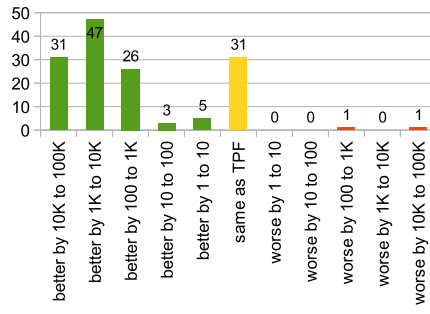
(c) number of queries for which brTPF has a better (resp. same or worse) #req than TPF



(d) number of queries for which brTPF has a better (or same, or worse) dataRecv than TPF



(e) breakdown of the number of queries in terms of the differences between #req of brTPF (maxM/R=30) and of TPF



(f) breakdown of the number of queries in terms of the differences between dataRecv of brTPF (maxM/R=30) and of TPF

Figure 1. Measurements of network-related metrics using WatDiv.